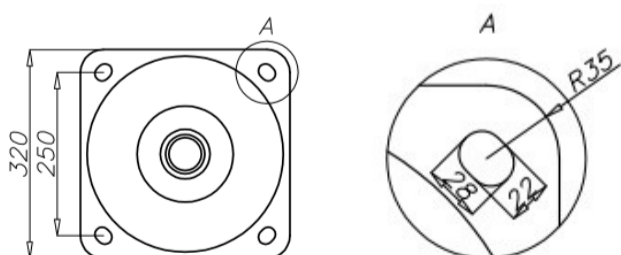
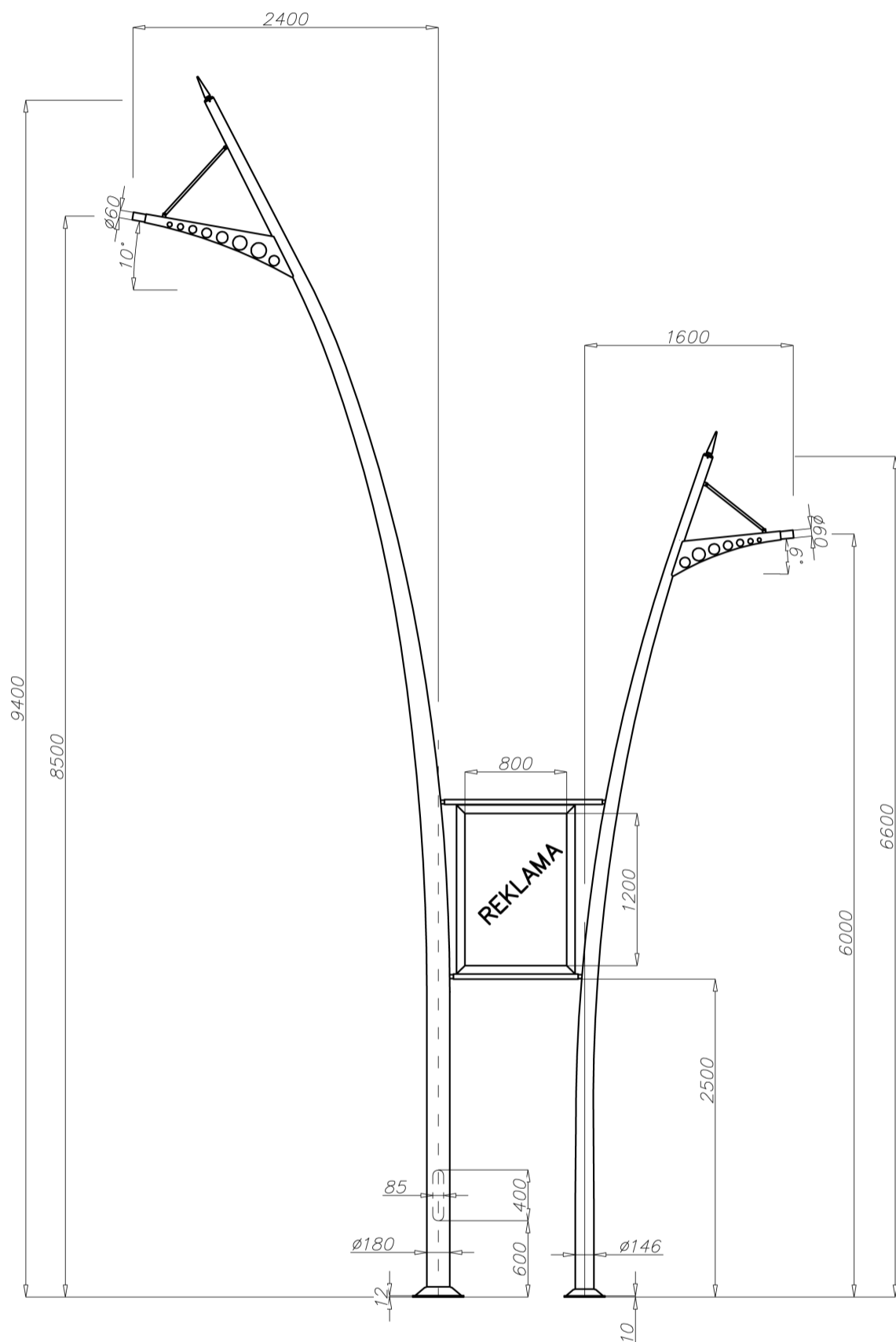


Aluminium column SAL DB-1

diameter 180 mm at the base plate



Technical data

Aluminium Column	SAL DB-1	
Product code	42990	
Column height H [m]	9,4	6,6
Wall thickness [mm]	4,3	4,2
Net weight [kg]	116,1	
Volume [m ³]	2,62	
Post top column	luminaires with $\varnothing 60$ spigot entry with weight and windage not exceeding data in resistance calculations	
Concrete footing / reinforcement basket	B-70 / Z-70	B-60 / Z-60
Concrete footing code / reinforcement basket code	311170 / 311207	311160 / 311206
Hot galvanized nut set / Hot galvanized ripable nut set	4012 / 4013	4008 / 4009

Resistance calculations

SAL DB-1 code 42990	acceptable windage of single luminaire [m ²] for $C_x=0,7$			
	8,5 m height		6 m height	
	$V_{ref.}= 22 \text{ m/s}$	$V_{ref.}= 24 \text{ m/s}$	$V_{ref.}= 22 \text{ m/s}$	$V_{ref.}= 24 \text{ m/s}$
acceptable mass of a single luminaire [kg]	I zone, IV location category	I and III zone, IV location category to 450 m AMSL	II zone, IV location category	I i III zone, IV location category to 450 m AMSL
15	0,52	0,31	0,48	0,26

SAL DB-1 code 42990	acceptable windage of single luminaire [m ²] for $C_x=0,7$			
	8,5 m height		6 m height	
	$V_{ref.}= 22 \text{ m/s}$	$V_{ref.}= 24 \text{ m/s}$	$V_{ref.}= 22 \text{ m/s}$	$V_{ref.}= 24 \text{ m/s}$
acceptable mass of a single luminaire [kg]	I zone, III location category	I and III zone, III location category to 450 m AMSL	II zone, III location category	I i III zone, III location category to 450 m AMSL
15	0,28	0,11	0,34	0,14

- surface: polished aluminium
- anodising in 10 colours, each with possibility of brightening
- option of powder painting in RAL colours (other colours available on request)
- elastomer protection option in the color of the column to a height of 350 mm (other height on request)
- ROSA standard wiring chamber
- packing: sleeve material
- option connect decorative light top
-